

Table of Contents

	<u>Page(s)</u>
Pierce County Fire Resource Plan .....	2
Definitions and Terms.....	4-7
Pierce County Fire Management Zone map .....	8
One-Call Activation of Teams Flow Chart.....	9
Guidelines and Rules of Operation.....	10-12
APPENDIX A.....Agency Zone Request List .....	13
APPENDIX B.....Strike Team/Task Force Team Leader Overview .....	14-20
APPENDIX C.....Pierce County Fire Coordinator Call Out.....	21
APPENDIX D.....Pierce County Overhead Team .....	22
APPENDIX E.....Resource Lists (Run Cards).....	23-38
Zone 6.....	23-27
Zone 8 .....	28-32
County Wide: Resources.....	33-38
APPENDIX F.....Hand crew Callout List.....	39
APPENDIX G.....Communication Center Activation Checklist .....	40
APPENDIX H.....Resources and Contacts	41
APPENDIX I.....DNR Inmate Crews/Standard Fire Lunches	43-44
APPENDIX J.....Fire Resource Activity Types	45
APPENDIX K .....	47-49

## **PIERCE COUNTY FIRE RESOURCE PLAN**

The Pierce County Fire Resource Plan was developed for the purpose of deploying large numbers of fire service personnel for disasters or significant fire or EMS incidents. This plan is in no way intended to replace normal mutual aid arrangements, but rather to enhance their use.

- 1) The plan was designed and is coordinated through the Pierce County Fire Chiefs Association's Emergency Management Committee. Currently, participation in this effort constitutes all Fire Agencies within Pierce County.

Mutual aid assistance is not a new concept in the Fire Service. Within Pierce County, mutual aid agreements between Fire Departments have been in place for several years.

The unique feature of the Pierce County Fire Resources Plan is that it allows for the rapid access of large numbers of resources with minimum effort of the requesting agency.

How the system works:

- Pierce County is divided into two (2) geographical zones. A Zone Coordinator manages each zone's fire resources.
  - In the event of a disaster or a significant incident that may tax the resources of an individual Department or an entire zone, a request goes to the other zones for appropriate resources (i.e. Structure Fire Task Forces, Engine, Ladder, or Basic Life Support Strike Teams).
  - These resources are preplanned within each zone and can be mobilized with a single call to the zone's Coordinating Communication Center.
- 2) This plan was prepared and is maintained by the members of the Pierce County Fire Chiefs Association, Emergency Management Committee, which are the Zone Coordinators, Alternates, and a representative from the Pierce County Department of Emergency Management, and approved by the Pierce County Fire Chiefs Association.
  - 3) This plan was originally adopted by the Pierce County Fire Chiefs Association 1/1/1989.

## **FIRE COORDINATOR**

The President of the Pierce County Fire Chiefs will maintain the Pierce County Fire Coordinator call out list. The Chair of the Emergency Management Committee will be the lead Fire Coordinator.

When a Resource Activation occurs, **FIRECOMM** will notify the Pierce County Fire Resource Coordinator, so that they may take steps to insure that adequate resources are supplied for the incident and there are enough remaining resources to protect the entire County and coordinate with the South Puget Sound Region of Kitsap, King, Mason and Pierce Counties.

## **TO INITIATE A CALL OUT:**

1. Text / Group Page or phone the first officer on the call out list (Appendix C, page 21) and direct them to contact FireComm **PRIORITY**.
2. If no response within five minutes, go to the next Officer on the list.

## **INFORMATION:**

The listed officers are all members of the Pierce County Fire Chiefs Association.

- When a large-scale major event occurs, the Resource Coordinator is the Point of Contact for all fire resources in Pierce County.

## DEFINITIONS AND TERMS

**Advanced Life Support (ALS) Strike Team** — 5 ALS (Transport capable) aid cars with 2 personnel, one of which is a paramedic and a team leader in a separate vehicle with common communications.

**Air Branch Manager** – Person who manages aircraft resources and reports to Operations. Typically a pilot or someone with extensive aviation background.

**Assembly Point** — A pre-designated place for team assembly and check-in.

**Base** — A location at which the primary logistics functions are coordinated and administered. The incident name or other designator will be added to the term “Base”. The Incident Command Post may be co-located with the base. There is only one base per incident.

**Basic Life Support (BLS) Strike Team** — 5 BLS (transport capable) aid cars with 2 personnel, one of which is an Emergency Medical Technician, and a Strike Team Leader in a separate vehicle with common communications.

**Camp** — A geographical site within the general incident area, separate from the incident base, equipped to and staffed to provide sleeping, food, water, and sanitary services to incident personnel.

**Command Vehicle** — A mobile vehicle used by the Team Leader carrying communications equipment, tactical command supplies, work sheets and other equipment required to facilitate Team Leader functions.

**Down-linking** – The transfer of data or video imaging from an aircraft to incident command.

**Division Supervisor** — Personnel assigned by the Incident Commander to supervise resources assigned, and oversee the operations in a defined geographical area of an incident.

**EMS Task Force** — 2 ALS and 3 BLS aid units (transport capable) and a Team Leader in a separate vehicle with common communications. ALS units staffed with 1 paramedic and 1 EMT. BLS units staffed with 1 EMT and 1 driver.

**Engine** — (Pumper) A structural fire attack vehicle containing a supply of water, a 750-gpm pump, attack lines and related equipment with a minimum of 3 personnel, maximum of 4.

**Fire Coordinator** — The representative (appointed by the County Fire Chief’s Association) who is responsible for the overall coordination and prioritization of fire resources during a declared emergency or disaster. The Fire Coordinator may be located at the County’s Emergency Operations Center (EOC), FireComm or any other location.

**Fire Resource Zone** — A group of fire districts or fire departments that comprise a specific geographical area in a county that form a resource zone.

**FLIR** – Forward Looking Infrared - Thermal imaging from aircraft. Can be video down-linked to incident command. Detects temperature differences. Can be used day or night. Can not see through clouds or heavy moisture. Can not see through heavy foliage.

**Incident Commander** — An individual who is responsible for the management of all Incident operations.

**Interface Task Force** — 2 Structural Engines, 2 Wildland Engines, 1 Tender, and a Team Leader in a separate vehicle with common communications and equipment to support structural protection in a Wildland interface fire.

**Ladder** — (Truck aerial) A structural fire attack vehicle containing a 65' + aerial ladder with a water tower device, ground ladders, forcible entry tools, ventilation and related equipment, and a minimum of 3 personnel, maximum of 5.

**Ladder Strike Team** — Consists of 5 Ladder Trucks and a Team Leader in a separate vehicle with common communications.

**Overhead Personnel** — Personnel who are assigned to supervisory ICS positions such as Incident Commander, Command Staff, General Staff, Directors, Supervisors, Unit Leaders, and MSO's.

**Passport Accountability System** — A fire ground accountability system that uses tags, passports, and status boards to account for companies and teams, and to identify the individual members of a team.

**Response Time** — Each vehicle requested will advise Fire Comm Dispatch within four (4) minutes of tone out of their availability for response. Arrival at the Assembly Point must be within 30 minutes of dispatch.

**Request Number/Mission Number** — Assigned by the Department of Emergency Management or Department of Natural Resources to account for resources ordered. All resources must have a Request Number when the State Mobilization Plan is activated.

**Rural Task Force** — 3 Structural Engines, 2 Water Tenders, and 1 Team Leader in a separate vehicle with common communications.

**Specialized Resources** — Other types of resources not identified in Strike Teams or Task Forces that can be used for disasters, fire, EMS, HAZMAT, or heavy rescue incidents.

**Staging Area** — A location either pre-determined or designated as an assembly area for resources that are assigned on an immediate available status (within 3 minutes).

**Strike Team** — A set number of single “like” resources (5) that have common communications, a Team Leader in a separate vehicle. Can be formed on or off the incident scene.

## **DEFINITIONS AND TERMS (cont'd)**

**Structural Engine Strike Team** — Consists of 5 Structural Engines and a Team Leader in a separate vehicle with common communications.

**Task Force** — A set number of “unlike” resources that have common communications and a Team Leader in a separate vehicle with common communications. Can be formed on or off the incident scene.

**Team Leader** — Team Leaders for Strike Team and Task Forces shall be a Battalion Chief or higher rank (except wildland). The Strike Team/Task Force Leader shall assemble, respond, and supervise a Strike Team or Task Force from their resource zone.

**Tender** — (Tanker, ICS Type 3) A fire fighting vehicle used to transport large amounts of water, 1000 gallons or more, a 200gpm pump, 1 portable pump, 100 feet 2-1/2” hose and 2 personnel.

**Tender Strike Team** — 5 Tenders and a Team Leader in a separate vehicle with common communications.

**Truck Strike Team** — 5 Ladder Trucks and a Team Leader in a separate vehicle with common communications.

**Urban Task Force** — 3 Structural Engines, 1 Ladder Truck (1 aid car optional) and a Team Leader in a separate vehicle with common communications.

**Unified Command** — A command structure which provides for all agencies or individuals who have jurisdictional responsibility, either geographical or functional, to jointly manage an incident through a common set of objectives.

**Wildland Engine** — An ICS type 6 vehicle. With a minimum of 50 gpm pump, 200 gallon tank, 300 feet of 1-1/2” hose and a minimum of 2 personnel, maximum of 3.

**Wildland Engine Strike Team** — 5 Wildland (ICS type 6) Engines with a Team Leader in a separate vehicle with common communications.

**Wildland Handcrew** — 10 personnel and a Team Leader trained in wildland firefighting with wildland equipment, transportation and communications. The crew will be equipped and mobile with limited to moderate experience.

**Wildland Task Force** — 3 Wildland Engines, 1 Water Tender and a Task Force Leader in a separate vehicle with common communications.

**Zone Coordinator/Alternate** — Designated officers responsible for coordinating fire service resources within designated geographical boundaries titled Zones.

## TYPES OF STRIKE TEAMS

**Advanced Life Support (ALS) Strike Team** — 5 ALS (transport capable) aid cars with 2 personnel, one of which is a paramedic and a team leader in a separate vehicle with common communications.

**Basic Life Support (BLS) Strike Team** — 5 BLS (transport capable) aid cars with 2 personnel, one of which is an Emergency Medical Technician, and a Strike Team Leader in a separate vehicle with common communications.

**Ladder Strike Team** — 5 Ladder Trucks and a Team Leader in a separate vehicle with common communications.

**Structural Engine Strike Team** — 5 Structural Engines and a Team Leader in a separate vehicle with common communications.

**Tender Strike Team** — 5 Tenders and a Team Leader in a separate vehicle with common communications.

**Truck Strike Team** — 5 Ladder Trucks, and a Team Leader in a separate vehicle with common communications.

**Wildland Engine Strike Team** — 5 (ICS type 6) Engines with a Team Leader in a separate vehicle with common communications.

## TYPES OF TASK FORCES

**EMS Task Force** — 3 ALS and 3 BLS aid units (transport capable) and a Team Leader in a separate vehicle with common communications.

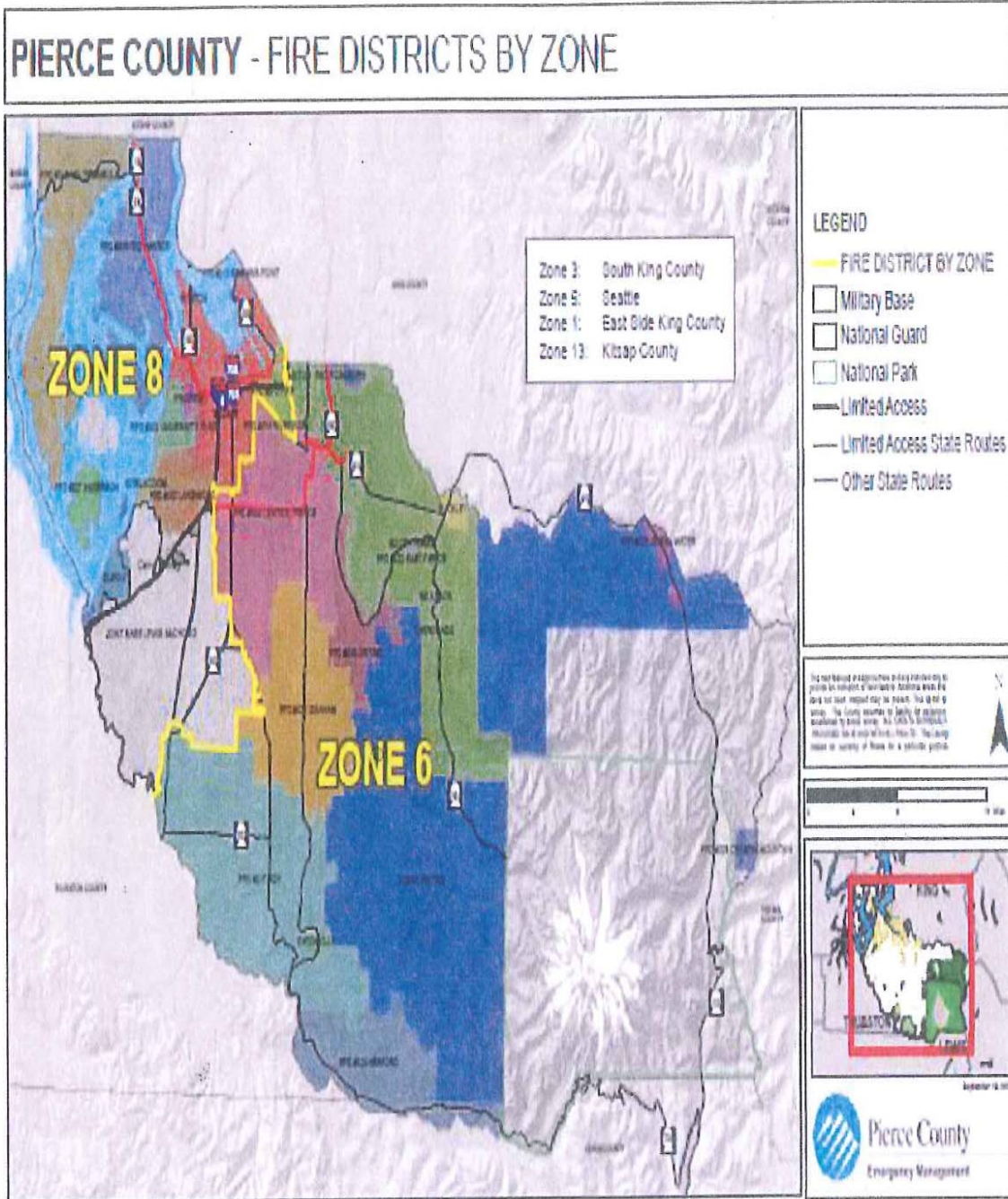
**Interface Task Force** — 2 Structural Engines, 2 Wildland Engines, 1 Tender, and a Team Leader in a separate vehicle with common communications and equipment to support structural protection in a wildland interface fire.

**Rural Task Force** — 3 Structural Engines, 2 Water Tenders, and 1 Team Leader in a separate vehicle with common communications.

**Urban Task Force** — 3 Structural Engines, 1 Ladder Truck, (1 aid car optional), and a Team Leader in a separate vehicle with common communications.

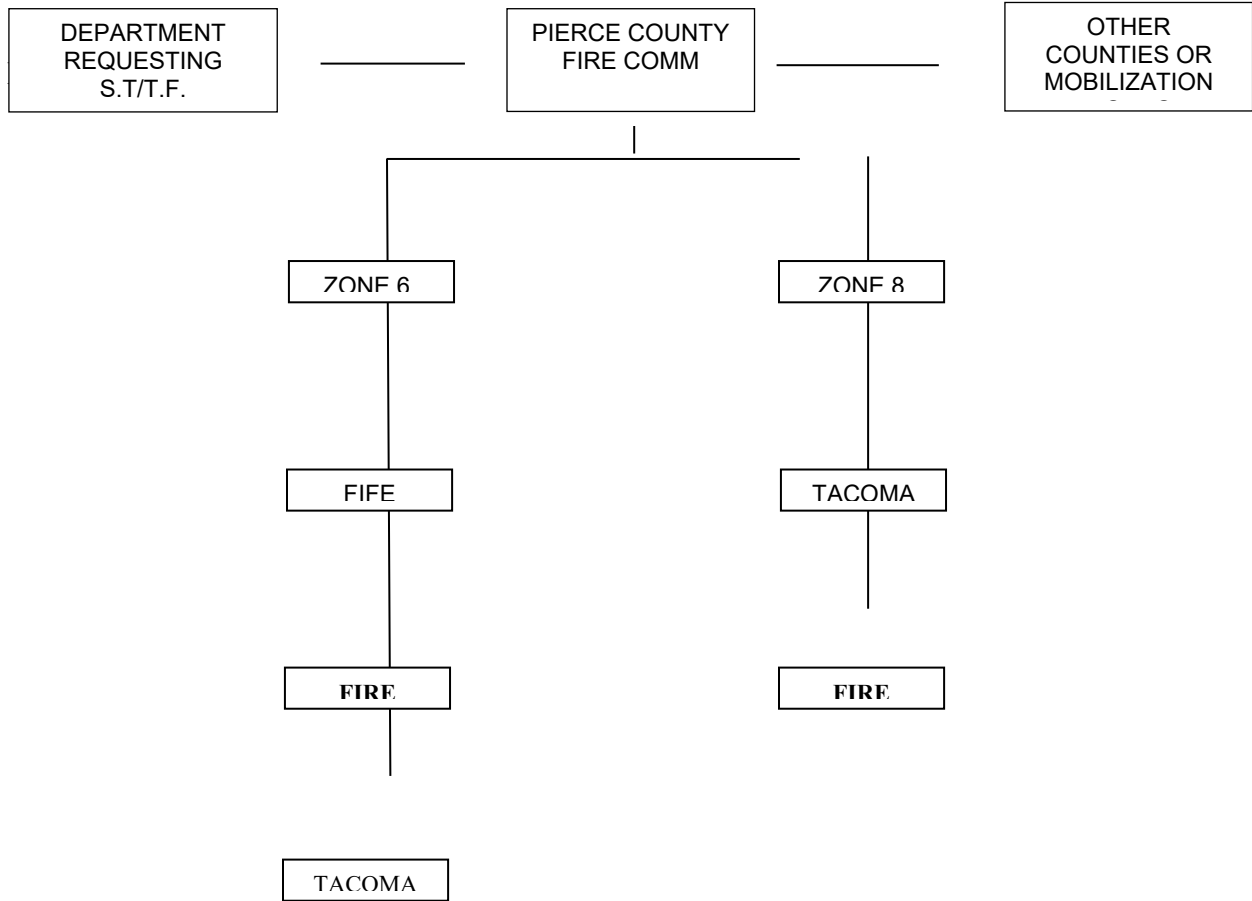
**Wildland Task Force** — 3 Wildland Engines, 1 Tender, and a Team Leader in a separate vehicle with common communications.

ZONE MAP





**ONE-CALL ACTIVATION OF TEAMS**



- 1) Strike Team or Task Force from Zone 6 or 8 is requested through FireComm.
- 2) Run cards predetermine the apparatus for response.
- 3) FireComm dispatches FireComm Users and respective dispatch center(s) simultaneously.
- 4) All apparatus will confirm response via their respective dispatch centers and get directed or patched to the appropriate frequency.
- 5) Out of service apparatus will report via their respective dispatch centers.
- 6) This one-call system will function when Pierce County Department of Emergency Management needs to make emergency notification to all Fire Dispatch Centers in Pierce County.

## **GUIDELINES AND RULES OF OPERATION**

### **INCIDENT COMMAND**

All participating agencies shall use the Incident Command System (ICS), in compliance with the National Incident Management System (NIMS), to manage resources activated in accordance with this plan.

### **NUMBERING SYSTEM FOR RESPONDING UNITS**

After a zone has assembled a Task Force or Strike Team response, the Coordinating Communication Center and the Team Leader shall renumber the Units as follows (zone prefix followed by apparatus number):

Zone 6 = Prefix (Engine 60-11, 60-94, etc.)

Zone 8 = Prefix (Leader 80-01, Engine 80-17 (for TFD 17), etc.)

If two or more teams are dispatched from the same zone, the second and subsequent team leader will utilize the next available number for that zone (i.e. second team leader from zone 6 = 60-02, third team leader from zone 8 = 80-03, etc.)

Designation for the Task Force/Strike Team Leader shall be “Leader” (i.e. Battalion 2 from zone 8 becomes “Leader 80-01”).

When teams respond out of county, preface the call sign with Pierce (i.e. Pierce Leader 60-01). Renumbered units will remain operational until they return to the Home Zone and are deactivated.

All Leaders shall use the Passport Accountability System to maintain accountability of all team members.

One Team Leader will be dispatched for the team. The Team Leader will be directed by dispatch to call Fire Comm for initial instructions. Team Leader contacts FireComm by phone. FireComm will advise the Team Leader of the Nature of incident, location, fire department handling incident, base location, ops frequency, composition of teams/units that have been requested, response mode, and special travel directions. The Team leader may appoint an Assistant Team Leader. The Assistant Team Leader will add an “A” to the end of the number identifier. (Assistant Team Leader from Zone 6 would be designated “Leader 60-01A”).

### **FIRE GROUND OPERATIONS**

A team assigned to incident operations will report to the Incident Commander, Staging Area, or Base as directed. Whenever possible, the Units will be kept together and under the control of the Team Leader. The team may split under the direction of the Team Leader and the Assistant Team Leader.

Team Leaders and/or Units committed to interior structure fire fighting or limited access hazardous environments shall have direct radio or communication capabilities with the

assigned supervisor. It is recognized that keeping EMS Units together is not practical, and their use and assignment will be at the discretion of the Incident Commander.

#### **FILL IN ASSIGNMENTS**

Resources used as fill-in will utilize the following guidelines.

- a. Pair up single Units with an in-service Unit from the Host Zone and then respond together.
- b. A single Unit that has communication capability directly with the Host Zone Communication Center may operate independently only when a rider from the Host Zone is provided. Contact with the Team Leader must be maintained.

#### **APPARATUS OPERATORS**

Strike Team/Task Force apparatus operators will only operate apparatus in which they respond. The host department or mutual aid companies with apparatus operating at the scene will maintain an operator when Strike Team/Task Force personnel are assigned to hose lines or elevated streams.

#### **OVERHEAD TEAMS**

Overhead teams are organized, requested and dispatched under the basic guidelines of this plan. The Overhead Team's purpose is to provide an organized response of command personnel to agencies requesting assistance in managing an emergency situation.

The team may be requested on second alarms or greater and upon request for special events. The team may assist command of the requesting agency and will not assume command of any incident.

## **PIERCE COUNTY DEPARTMENT OF EMERGENCY MANAGEMENT**

### **Notification of Emergency Operations Center (EOC)**

Pierce County Department of Emergency Management shall be notified whenever resources are requested under this plan.

The Pierce County Emergency Operations Center (EOC) is a facility designated to provide coordination and support for inter-agency needs during field operations. In general, the EOC is a location where agencies can request resources, which are outside those an agency normally has available. It is also the coordination center for collecting emergency and disaster information so Pierce County resources can be effectively used to support emergency response efforts of County agencies and other jurisdictions.

The EOC may be activated by Emergency Management staff, or upon request from an agency or jurisdiction. The basic concept of operations is to open the facility, make contact with field command officers, get information as to what is happening, and respond to requests for assistance or coordination.

Examples of support from the EOC would include, but not be limited to, requests for State or Federal assets, additional notifications, coordination of on-scene support needs such as feeding emergency workers, coordination with the media for release of emergency public information, weather reports, and locating special resources. When requests are made, unless arrangements are made otherwise, it is policy that the requesting agency expects to cover costs associated with requested resources.

The Pierce County Department of Emergency Management has trained additional support staff to assist with EOC operations. Activation time depends upon the circumstances, but our policy is to be able to activate the facility within one hour of the request. Full staffing would potentially take longer, depending on the time of day and other circumstances.

**APPENDIX – A**

**AGENCY ZONE REQUEST LIST**

<u>Location of Incident</u>	<u>Response Order</u>
Buckley Fire Dept – City (Zn 6)	8 – 3 – 5 – 1 – 3 or PCW
Carbonado Fire Dept (Zn 6)	8 – 3 – 5 – 1 – 3 or PCW
District 3 – West Pierce (Zn 8)	6 – 3 – 5 – 13 – 1 or PCW
District 5 – Gig Harbor (Zn 8)	6 – 13 – 3 – MC – 5 or PCW
District 6 – Central Pierce (Zn 6)	8 – 3 – 5 – 1 – 13 or PCW
District 13 – Browns Point (Zn 8)	6 – 3 – 5 – 1 or PCW
District 16 – Key Peninsula (Zn 8)	6 – 13 – 3 – MC – 5 or PCW
District 17 – South Pierce (Zn 6)	8 – 3 – LC – 13 – 5 or PCW
District 18 – Orting Valley (Zn 6)	8 – 3 – 5 – 1 – 13 or PCW
District 21 – Graham (Zn 6)	8 – 3 – 5 – 13 – 1 or PCW
District 22 – East Pierce (Zn 6)	8 – 3 – 5 – 1 – 13 or PCW
District 23 – Elbe/Ashford (Zn 6)	8 – 3 – 5 – 1 – LC or PCW
District 25 – Crystal Mt. (Zn 6)	8 – 3 – 1 – 5 – LC or PCW
District 26 – Greenwater (Zn 6)	8 – 1 – 3 – 5 – LC or PCW
District 27 – Anderson Island (Zn 8)	6 – 3 – 5 – 13 – TC or PCW
Dupont Fire Dept (Zn 8)	6 – 3 – 5 – 13 – TC or PCW
Eatonville Fire Dept – City (Zn 6)	8 – 3 – LC – 13 – 5 or PCW
J. B. Lewis McChord Fire Dept (Zn 8)	6 – 3 – 5 – 13 – TC or PCW
Ruston Fire Dept (Zn 8)	6 – 3 – 5 – 13 – 1 or PCW
Tacoma Fire Dept (Zn 8)	6 – 3 – 5 – 13 – 1 or PCW

Zone 3	South King County
Zone 5	Seattle
Zone 1	East Side King County
Zone 13	Kitsap County
MC	Mason County
TC	Thurston County
LC	Lewis County

## **APPENDIX – B**

### **STRIKE TEAM / TASK FORCE LEADER**

#### **CHECKLIST**

Note: *(This check list should be considered as a minimum requirement for this position)*

- Obtain briefing from Division/Group Supervisor.
- Review strike team/task force assignments with subordinates and assign tasks.
- Monitor work progress and make changes when necessary.
- Determine need for assistance on assigned task.
- Coordinate activities with adjacent strike team/task forces and single resources.
- Submit situation and resource status information to Division/Group Supervisor.
- Report special events.
- Request service/support.
- Report status and location changes.
- Maintain Unit Log.

### **RESPONSIBILITIES AND PROCEDURES**

#### **ORGANIZATION**

The Strike Team/Task Force Leader is responsible for performing tactical assignments assigned to a strike team or a task force. The Strike Team/Task Force Leader reports work progress, resource status, and other information to a Division Supervisor and maintains work records on assigned personnel. The Strike Team/Task Force Leader reports to a Division/Group Supervisor.

**APPENDIX – B (cont'd)****STRIKE TEAM LEADER AND INCIDENT COMMAND SYSTEM ORGANIZATION****DESCRIPTIONS**

A strike team is a set number of single resources of the same type. A strike team must have common communications and a leader. Strike teams may be formed either on or off of the incident. If a strike team is formed on the incident, it will be disassembled prior to demobilization.

A task force is composed of dissimilar resources of any kind or type. A task force is formed when a combination of resources is needed for a particular assignment. A task force must have common communications and a leader. Task forces may be formed on or off the incident. If a task force is formed on the incident it will be disassembled when no longer required for a particular assignment.

**MAJOR RESPONSIBILITIES AND PROCEDURES**

The major responsibilities of a Strike Team/Task Force Leader are stated below. Following each responsibility are listed procedures for implementing the responsibility.

- ✓ Obtain briefing from Division/Group supervisor Receive briefing and initial instructions concerning work assignments.
- ✓ Obtain the incident action plan when available.
- ✓ Review assignments with subordinates and assign tasks.
- ✓ Reviews strike team/task force assignment and general activities with subordinate personnel.
- ✓ Assign tasks to subordinate personnel by providing time requirements and specific geographic references.
- ✓ Monitor work progress when necessary and make changes.
- ✓ Obtain information concerning progress and assigned tasks from subordinate personnel by:
  - Special requests to personnel.
  - Periodic routine reports from personnel.
  - Personal survey. Compare progress with assignments (assuring a coordinated effort between adjacent resources).
- ✓ Take corrective action, as appropriate.
- ✓ Ensure general welfare and safety of strike team/task force personnel.
- ✓ Maintain communications with subordinates.

## **APPENDIX – B (cont'd)**

### **STRIKE TEAM LEADER AND INCIDENT COMMAND SYSTEM ORGANIZATION**

Determine the need for assistance on assigned work task. In performing this function, the Strike Team/Task Force Leader must use personal judgment in determining whether a temporary reduction in capability (e.g., equipment failure, personnel sickness, etc.) warrants a request for the replacement of a strike team/task force resource. Procedures for requesting assistance is as follows:

Identify need for assistance by means of:

- ✓ Reports from subordinates
- ✓ Monitoring work progress
- ✓ Personal observations

Once the need for assistance has been confirmed:

- ✓ Determine appropriate corrective action
- ✓ Determine assistance required to implement corrective action
- ✓ Coordinate with Division/Group Supervisor and request assistance



**APPENDIX – B (cont’d)**

**STRIKE TEAM/TASK FORCE LEADER**

**ASSEMBLY POINT CHECKLIST**

Action	Assemble and check in the assigned Units at a pre-designated assembly point and report their status. Direct Task Force/Strike Team travel from the Zone assembly point to the designated checkpoint at the assignment location.
Conditions	Information from FIRE COMM must include Zone assembly points, assigned Units, special route of travel, reporting requirements, radio frequency, and check-in point.
Standards	All assigned Units are assembled at the Zone assembly point fully equipped. All Units are checked in utilizing the correct check-in procedure. Task Force/Strike Team responds to assignment location.

**KEY COMPONENTS:**

1. After tone-out, obtain complete information from FIRE COMM (253-588-5217) - Activate Unit Log.
2. Identify Zone predetermined assembly point.
3. Travel to Zone assembly point.
4. Check arrival status of assigned units.
5. Inspect assigned Units; make introductions; appoint assistant Task Force/Strike Team Leader; collect Passports; note qualifications of personnel.
6. Number assigned Units on *officer’s* outside windshield according to numbering system identified on page 10 of this plan and assign Task Force/Strike Team radio frequency. The assigned unit number and frequency should be displayed on the *inside* of the cab for reference by crewmembers.
7. Brief assigned Unit Leaders and determine: route of travel; en route logistical needs (fuel, food, etc.); proper formation and communications; and provide instructions for travel procedures, safety, and actions in event of en route problems.
8. Provide FIRE COMM with route of travel and request arrangements for en route logistical needs. Determine en route check points if necessary. When possible, communication of this information with FIRE COMM should be made via telephone (253-588-5217).
9. Report Task Force/Strike Team status to FIRE COMM (includes any Units that fail to arrive or fail readiness inspection). Report “In Service Responding”.
10. Direct Units during travel to check-in point or incident location.
11. Report to the designated official at the check-in point and provide required information.
12. Await assignment or further instructions: Available; Assigned; Out-of- service.
13. Communications en route will be through Team Leader. Individual units will not contact FireComm or any dispatch agency while en route.

**APPENDIX – B (cont’d)**

**STRIKE TEAM/TASK FORCE LEADER**

**TACTICAL ASSIGNMENT CHECKLIST**

Action	Direct tactical operations.
Conditions	Given assignment for tactical deployment of Task Force/Strike team.
Standards	Complete assignments to meet requirements of the incident action plan and the instructions from the supervisor. Ensure safety and welfare of personnel and equipment.

**KEY COMPONENTS:**

1. Size up incident situation.
2. Plan tactical action on assigned area.
3. In conjunction with individual Fire Officers, assess capabilities of assigned personnel and equipment.
4. Brief Fire Officers and make specific assignments (include safety, escape routes, fire behavior and/or for other contingencies)
5. Monitor progress/work to ensure it meets prescribed standards. Make corrections as necessary.
6. Communicate information on changing conditions and special events to Fire Officers and Supervisor.
7. Coordinate Task Force/Strike Team activities with resources working in adjacent areas.
8. Determine needs for additional resources, logistical support, and replacements; coordinate with Supervisor.
9. Mantain Unit log.
10. Brief relief forces.

**APPENDIX – B (cont’d)**

**STRIKE TEAM/TASK FORCE LEADER**

**TEAM DEMOBILIZATION CHECKLIST**

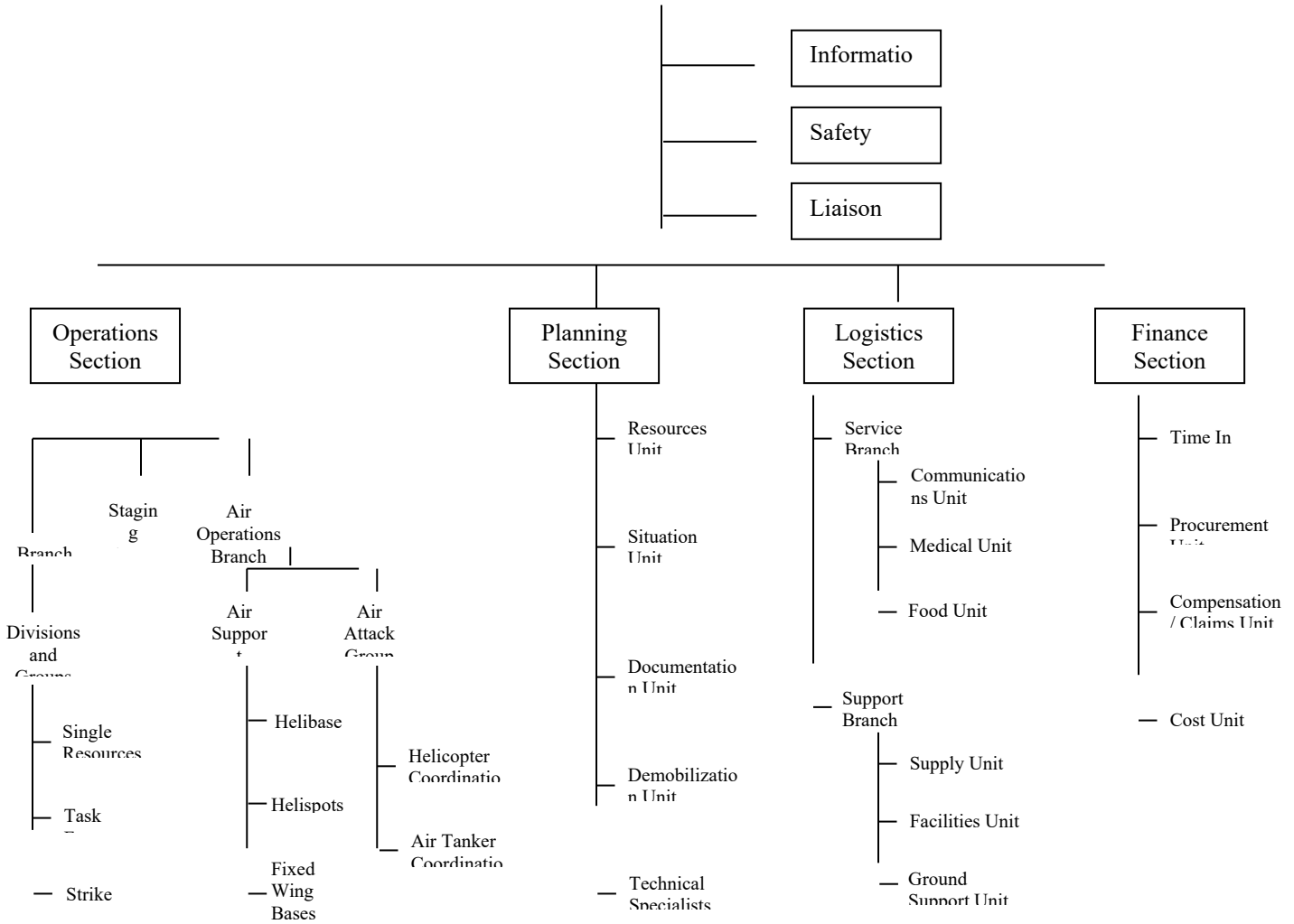
Action	Deploy Task Force/Strike Team Leader to Home Zone.
Conditions	Given instruction to demobilize Task Force/Strike Team from assigned incident to Home Zone.
Standards	Units are returned to disassembly point or home location, or check in at other incident safely and in required time frame.

**KEY COMPONENTS:**

1. Receive instructions.
2. Confirm demobilization instructions with Supervisor at incident.
3. Inspect Units and personnel to ensure they are ready to leave in a state of readiness (rest, repairs, tools, fuel, etc.) Lost or damaged equipment, personnel injuries, etc. are to be entered on the Team Leader Incident Report form.
4. Complete incident evaluation forms and Unit Log.
5. Complete demobilization checkout.
6. Distribute time reports to Company Officers.
7. Assemble Task Force/Strike Team for departure and brief Company Officers.
8. Depart incident for assigned locations or return to zone assembly point.
9. At assembly point, inspect units and personnel and disassemble Task Force/Strike Team.
10. Team Leader contacts FireComm to advise the team is demobilized. Each unit checks in with their respective dispatch center prior to leaving assembly point after demobilization is complete.
11. Team Leader makes reports, maintains originals, and forwards a complete set of reports to his/her Zone Coordinator. The Zone Coordinator maintains a set and forwards a set to Emergency Management Committee Chair.

APPENDIX – B (cont'd)

**INCIDENT COMMAND**



**APPENDIX – C****PIERCE COUNTY FIRE COORDINATOR****CALL OUT LIST**

<b>Call Sign</b>	<b>Name</b>	<b>Home Phone</b>	<b>Cell Phone</b>	<b>Pager</b>
<b>C462</b>	AC Guy Allen	360-874-8344	253-255-4076	253-596-7401
<b>F322</b>	Capt. Gary McVay	253-566-1815	253-691-1313	253-934-1301
<b>C502</b>	AC Eric Watson	253-851-3333	253-377-4602	
<b>C84</b>	Chief Bob Hudspeth	360-832-1772	253-304-7828	
<b>TC187</b>	DC Faith Mueller	253-307-0797	253-973-0089	253-428-9092
<b>F402</b>	Lt. Bill Hash		253-405-6901	
<b>C77</b>	Chief Cliff McCollum	253-952-4207	253-691-1302	253-982-4776
<b>C34</b>	Chief Alan Predmore	360-825-0454	253-261-3062	
<b>C105</b>	AC Jim Jaques	253-939-6062	253-405-2061	253-573-5976
<b>C303</b>	AC Paul Tinsley	253-581-2126	253-377-9535	
<b>C171</b>	DC Chris Grant	360-893-3290	253-320-1317	
<b>C103</b>	AC Ed Goodlet	253-952-3438	253-606-6601	

**DIRECTIONS:**

1. Text / Group page or phone the first officer on the list and direct them to contact FireComm PRIORITY.
2. If no response within five minutes, go to the next Officer on the list.

**INFORMATION:**

- The above noted officers are all members of the Pierce County Fire Chiefs Association.
- When a large-scale major event occurs, the Resource Coordinator is the Point of Contact for all fire resources in Pierce County.
- When a Resource Activation occurs, **FIRECOMM** will notify the Pierce County Fire Resource Coordinator, so that they may take steps to insure that adequate resources are supplied for the incident and there are enough remaining resources to protect the entire County and coordinate with the South Puget Sound Region of Kitsap, King, Mason and Pierce Counties.

**APPENDIX – D****PIERCE COUNTY WIDE: OVERHEAD TEAM**

<b>RESOURCES:</b>	<b>CALLSIGN</b>	<b>PERSONNEL:</b>	<b>DEPARTMENT</b>
<b>Overhead Team:</b>	<b>*C102</b>	<b>D/C John McDonald</b>	<b>East Pierce</b>
	<b>*C602</b>	<b>D/C Pat Donovan</b>	<b>Central Pierce</b>
<b>6 Personnel</b>	<b>*TC189</b>	<b>A/C Mike Mitchell</b>	<b>Tacoma</b>
5 Chief Officers	<b>*C303</b>	<b>A/C Paul Tinsley</b>	<b>West Pierce</b>
1 MSO	<b>*C503</b>	<b>A/C Steve Nixon</b>	<b>Gig Harbor Fire</b>
<b>Medical List:</b>	<b>*C905</b>	<b>A/C Todd Jensen</b>	<b>Graham</b>
	C172	A/C Sam Yount	South Pierce
	C104	A/C Russ McCallion	East Pierce
	C506	D/C Bill Shoemaker	Gig Harbor Fire
	C318	B/C Steve Murphy	West Pierce
		Judy Murphy	Central Pierce
	C317	B/C Bill Barber	West Pierce
	TC221	B/C Mike Newhouse	Tacoma Fire
	F644	Capt. Dan Beckman	Central Pierce
<b>Chief Officers</b>	B/C	On Duty B/C	Central Pierce
	B/C	On Duty B/C	East Pierce
	C502	A/C Eric Watson	Gig Harbor Fire
	C84	Chief Bob Hudspeth	Eatonville Fire
	C34	Chief Alan Predmore	Buckley Fire
	C77	Chief Cliff McCollum	Browns Point
	C503	A/C Steve Nixon	Gig Harbor Fire
	C105	A/C Jim Jaques	East Pierce
	C171	D/C Chris Grant	South Pierce
	C605	A/C Bryan Pearson	Central Pierce
	C462	A/C Guy Allen	Key Peninsula
	C40	Chief Zane Gibson	Orting Valley F&R
	C103	A/C Ed Goodlet	East Pierce
	F322	Capt. Gary McVay	West Pierce

**APPENDIX – E**

**ZONE 6: COORDINATORS**

**Preplanned Resources**

ALS Strike Team:	1	Interface Task Force:	1
Ladder Strike Team:	PCW	EMS Task Force:	1
Structure Eng Strike Team:	1	Rural Task Force:	1
Tender Strike Team:	1	Urban Fire Task Force:	1
Wildland Eng Strike Team:	PCW	Wildland Task Force:	1

**Radio Frequencies**

153.890 Mhz

**Assembly Points**

CPFR Stat. 71, 902 7th St NW, Puyallup  
 CPFR Stat. 61, 100 114<sup>th</sup> St. S, Parkland

**Zone Coordinator**

Robert Hudspeth  
 Eatonville FD  
 Office (360) 832-6931  
 Fax (360)  
 Home (253) 952-3438  
 Cell (253) 304-7828

**Alternate**

Bill Hash  
 Orting Valley F&R  
 Office (360) 893-2221  
 Fax (360) 893-8524  
 Cell (253) 405-6901

**APPENDIX – E****ZONE 6: RESOURCE DEPARTMENTS**

<u>Zone Departments</u>	<u>Business #</u>	<u>Dispatch Center</u>	<u>Frequency</u>
Dist 6 - Central Pierce Fire & Rescue	253-591-5733	Tacoma	800 mhz
Dist 17 - So Pierce Fire & Rescue	253-843-2424	FireComm	153.890 Mhz
Dist 18 – Orting Valley	360-893-2221	FireComm	153.890 Mhz
Dist 21 – Graham Fire & Rescue	253-847-8811	FireComm	153.890 Mhz
Dist 22 - East Pierce Fire & Rescue	253-863-1800	FireComm	153.890 Mhz
Dist 23 - Ashford/Elbe	360-569-2752	FireComm	153.890 Mhz
Dist 25 - Crystal Mtn Fire	360-663-2634	Fife	159.090 Mhz
Dist 26 - Greenwater Fire	360-663-2522	Fife	159.090 Mhz
Buckley, City of	360-829-1441	Fife	159.090 Mhz
Carbonado, City of	360-829-0125	Fife	159.090 Mhz
Eatonville, Town of	253-832-6931	FireComm	153.890 Mhz



**APPENDIX – E**

**ZONE 6: RUN CARDS**

**URBAN TASK FORCE**

PRIMARY	SECOND	THIRD
E11	E12	E14
E95	E94	E93
E40	E43	
E170	E171	
E84	E83	

PRIMARY	SECOND	THIRD
L68		
L13		
L91		

PRIMARY	SECOND	THIRD
M11	M14	M16
M40	M43	
M61	M63	M66

TM LDR	SECOND	THIRD
B61	B66	C605
C103	C102	
C903	C904	

**RURAL TASK FORCE**

PRIMARY	SECOND	THIRD
E61	E63	
E95	E94	E93
E170	E171	
E11	E12	E14
E84	E83	

PRIMARY	SECOND	THIRD
M11	M14	M16
M40	M43	
M61	M63	M66

PRIMARY	SECOND	THIRD
T40	T42	
T19		
T95		
T170	T171	

TM LDR	SECOND	THIRD
B61	B66	C605
C103	C102	
C903	C904	

**ASSEMBLY POINTS:**

CPFR Stat. 71, 902 7th St NW, Puyallup  
 CPFR Stat. 61, 100 114<sup>th</sup> St. S, Parkland

**APPENDIX – E**

**ZONE 6: RUN CARDS (CONT'D)**

*– Alpha page ALL Zone Coordinators for response on this page –*

**INTERFACE TASK FORCE**

PRIMARY	SECOND	THIRD
E61	E73	
E95	E94	E93
E11	E12	E18

PRIMARY	SECOND
BR11	BR16
BR60	BR69

TM LDR	SECOND
B66	B61
B94	C903
C84	
C102	C103

PRIMARY	SECOND
T40	T42
T19	
T170	

**STRUCTURAL ENGINE STRIKE TEAM**

PRIMARY	SECOND	THIRD
E61	E73	
E95	E94	E93
E11	E12	E14
E40	E43	
E170	E171	E174
E84	E83	
E34	E35	
E71	E67	E66

TM LDR	SECOND
B66	B61
B94	C903
C84	
C102	C103

**ASSEMBLY POINTS:**

CPFR Stat. 71, 902 7th St NW, Puyallup  
 CPFR Stat. 61, 100 114<sup>th</sup> St. S, Parkland

**APPENDIX – E**

**ZONE 6: RUN CARD (CONT'D)**

*– Alpha page ALL Zone Coordinators for response on this page –*

**ALS STRIKE TEAM**

PRIMARY	SECOND	THIRD	TM LDR
M67	M61	M66	C104
M91	M95	M96	C905
M13	M11	M14	C172
M40	M402	M43	
M170	M171		
M63	M65	M60	

**ASSEMBLY POINTS:**

CPFR Stat. 71, 902 7th St NW, Puyallup

CPFR Stat. 61, 100 114<sup>th</sup> St. S, Parkland

**TENDER STRIKE TEAM**

PRIMARY	SECOND	THIRD	TM LDR	SECOND
T95	T92		B94	C903
T67			B61	B66
T40	T42		C103	
T170	T171			
T19				
T2353	T2351			

**WILDLAND TASK FORCE**

PRIMARY	SECOND	PRIMARY	SECOND	THIRD	TM LDR	SECOND
BR11	BR16	T94	T92		B94	C903
BR60	BR69	T40	T42		B61	B66
BR94		T170	T171		C103	
BE176	BR170	T19				

**APPENDIX – E**

**ZONE 8: COORDINATORS**

**PREPLANNED**

**RESOURCES:**

ALS Strike Team:	1	EMS Task Force:	PCW
Ladder Strike Team:	PCW	Interface Task Force:	1
Structure Eng Strike Team:	1	Rural Task Force:	1
Tender Strike Team:	1	Urban Fire Task Force:	1
Wildland Eng Strike Team:	PCW	Wildland Task Force:	PCW

**RADIO FREQUENCIES:**

153.890 Mhz

154.355 Mhz

**ASSEMBLY POINTS:**

Stn 21 5000 Steilacoom Bl SW,  
Lakewood

TFD 12 2015 54th Ave E,  
Fife

Stn 51 6711 Kimball Dr, Gig Harbor

**ZONE COORDINATOR:**

Eric Watson

Dist 5/Gig Harbor Fire

Office 253-851-3111

Fax 253-851-9606

Home 253-851-3333

Cell 253-377-4602

**ALTERNATE:**

Faith Mueller

Tacoma Fire

Office 253-591-5011

Fax 253-591-5746

Home 253-307-0793

Cell 253-973-0087

**APPENDIX – E****ZONE 8: DEPARTMENTS RESOURCES**

<b><u>ZONE DEPARTMENTS</u></b>	<b><u>BUSINESS</u></b>	<b><u>DISPATCH</u></b>	<b><u>FREQUENCY</u></b>
Dist 3 – West Pierce	253-564-1623	FireComm	153.890 Mhz
Dist 5 - Gig Harbor	253-851-3111	FireComm	153.890 Mhz
Dist 13 - Browns Point	253-952-4776	FireComm	153.890 Mhz
Dist 16 - Key Peninsula	253-884-2222	FireComm	153.890 Mhz
Dist 27 - Anderson Island	253-884-4040	FireComm	153.890 Mhz
Dupont, City of (42)	253-964-8121	FireComm	153.890 Mhz
Ruston, City of (46)	253-759-3544	Tacoma	153.890 Mhz
Tacoma, City of	253-591-5733	Tacoma	800 Mhz
J. B. Lewis McChord	253-912-2049	JBLM	153.890 Mhz

**APPENDIX – E**

**ZONE 8 RUNCARDS**

**URBAN TASK FORCE**

PRIMARY	SECOND	THIRD
TE99	TE98	
E23	E24	E20
E52	E56	E59
E103	E104	E105
E44	E45	
E77	E76	
E32	E24	

PRIMARY	SECOND	THIRD
TL99	TL98	
L21		
L101		
TL98		

TM LDR	SECOND
TFD BC	
B20	
B51	

PRIMARY	SECOND	THIRD
M20	M22	M21
M51	M59	M58
TM99		
M31	M24	
M44	M47	

TM99 = TACOMA MEDIC 99  
 TL99 = TACOMA LADDER 99  
 TE98 = TACOMA ENGINE 98

**RURAL TASK FORCE**

PRIMARY	SECOND	THIRD
TE99	TE98	
E23	E24	E20
E52	E56	E59
E77	E76	
E44	E45	
E32	E24	

PRIMARY	SECOND	THIRD
M20	M22	M21
TM99		
M31	M24	

TM LDR	SECOND	THIRD
B20		
B51	C503	

PRIMARY	SECOND	THIRD
T55	T57	T53
T47	T45	T44
T105	T101	
T2751		

**INTERFACE TASK FORCE**

PRIMARY	SECOND	THIRD
E23	E24	E20
TE99	TE98	
E52	E56	E59
E77	E76	

PRIMARY	SECOND	THIRD
BR44	BR46	
BR51	BR55	
BR76		
BR103		

TM LDR	SECOND
B51	C503
B20	
C77	
TFD BC	

PRIMARY	SECOND	THIRD
T55	T57	T53
T47	T45	T44
T105	T101	
T2751		

**STRUCTURAL ENGINE STRIKE TEAM**

PRIMARY	SECOND	THIRD
TE99	TE98	
E23	E24	E20
E52	E56	E59
E103	E104	E105
E77	E76	
E44	E45	E47
TE98		

TM LDR	SECOND
B51	C503
B20	
TFD BC	

TE98/99 = TACOMA ENGINES 98/99

**ASSEMBLY POINTS:**

STN 21 \*\* 5000 STEILACOOM BLVD SW, LAKEWOOD

STN 51 \*\* 6711 KIMBALL DR, GIG HARBOR

TFD STN 12 \*\* 2015 54 AV E, FIFE

**APPENDIX – E**

**ZONE 8 RUNCARDS (CONT'D)**

**ALS STRIKE TEAM**

PRIMARY	SECOND	THIRD
M59	M58	M51
TM99	TM98	
M20	M22	M21
M44	M47	
M31	M24	

TM LDR	SECOND
B20	
B51	C506
C77	

TM 98/99 = TACOMA MEDIC 98/99

**TENDER STRIKE TEAM**

PRIMARY	SECOND	THIRD
T55	T57	T53
T57	T53	
TT51		
T47	T45	T44
T101	T105	

TM LDR	SECOND
B20	
B51	C503

TT51 = TACOMA TENDER 51

**ASSEMBLY POINTS:**

STN 21 \*\* 5000 STEILACOOM BLVD SW, LAKEWOOD

STN 51 \*\* 6711 KIMBALL DR, GIG HARBOR

TFD STN 12 \*\* 2015 54 AV E, FIFE



**APPENDIX – E**

**PIERCE COUNTY WIDE: WILDLAND INTERFACE RESOURCES**

<b><u>PREPLANNED RESOURCES:</u></b>	<b><u>TOTAL</u></b>	<b><u>ZONE 6</u></b>	<b><u>ZONE 8</u></b>
Wildland Eng Strike Team:	PCW	0	0
Wildland Tender Strike Team:	PCW	0	0
Interface Task Force:	2	1	1
Wildland Task Force:	2	1	1
Wildland Hand Crew:	PCW	0	0

**RADIO FREQUENCIES:**

153.890 Mhz

**ASSEMBLY POINTS:**

Stn 51 6711 Kimbal Dr, Gig Harbor  
 Stn 66 9813 128th St E, Puyallup

**COUNTY COORDINATOR:**

A/C Guy Allen  
 Key Peninsula Fire  
 8911 Key Peninsula Hwy KPN  
 Lakebay WA 98349  
 Office 253-884-2222  
 Fax 253-884-9437  
 Cell 253-255-4076  
 Home 360-874-8344

**ALTERNATE:**

Capt. Gary McVay  
 West Pierce F&R  
 3631 Drexler Dr. W  
 University Place, WA 98466  
 Office 253-983-4539  
 Fax 253-588-2317  
 Cell 253-691-1313  
 Home 253-566-1815

**APPENDIX – E****PIERCE COUNTY WIDE: WILDLAND INTERFACE RESOURCES DEPARTMENTS**

<u>Zone Departments</u>	<u>Business #</u>	<u>Dispatch Center</u>	<u>Frequency</u>
Dist 5 - Gig Harbor	253-851-3111	FireComm	153.890 Mhz
Dist 6 - Central Pierce Fire & Rescue	253-591-5733	Tacoma	800 Mhz
Dist 13 – Browns Point/Dash Point	253-952-4776	FireComm	153.890 Mhz
Dist 16 - Key Peninsula	253-884-2222	FireComm	153.890 Mhz
Dist 17 – So. Pierce Fire & Rescue	253-843-2424	FireComm	153.890 Mhz
Dist 18 – Orting Valley F&R	360-832-6931	FireComm	153.890 Mhz
Dist 21 - Graham	253-847-8811	FireComm	153.890 Mhz
Dist 22 - East Pierce Fire & Rescue	253-863-1800	FireComm	153.890 Mhz
Dist 23 - Ashford/Elbe	360-569-2752	FireComm	153.890 Mhz
Eatonville, Town of	360-832-6931	FireComm	153.890 Mhz

**APPENDIX – E**

**PIERCE COUNTY WIDE: WILDLAND INTERFACE RESOURCES RUN CARD**

*– Alpha page ALL Zone Coordinators for response on this page –*  
**WILDLAND ENGINE STRIKE TEAM**

**IN COUNTY/REGION**

PRIMARY	SECOND	THIRD
BR11	BR16	
BR44	BR 46	
BR51	BR55	
BR69	BR60	
BR76		
BE176	BR170	BR173
BR24		

TM LDR	SECOND
B61	B66
B51	C503
B11	C102

**RED CARD  
 TEAM LEADERS**  
 GHFMO Norby Johnson  
 GHFMO Todd Meyer  
 EPFR Kyle Blyin  
 KPFD Dale Heidal  
 KPFD Ken Foss

**RED CARD  
 TEAM LEADERS  
 IN TRAINING**  
 CPFR Wayne Garden  
 GHFMO Steve Nixon  
 KPFD Chuck West

IN COUNTY/REGION TEAM LEADERS ARE NOT RED CARDED

**TENDER STRIKE TEAM**

PRIMARY	SECOND	THIRD
T55	T57	T53
T67		
T95	T92	
T44	T45	T47
T40	T42	
T171	T170	T173
T19		
T101	T105	

TM LDR	SECOND
B61	B66
B51	C503
B94	C903
C103	C102

**ASSEMBLY POINTS:**

STN 51 \*\* 6711 KIMBALL DR, GIG HARBOR  
 STN 66 \*\* 9813 128 ST E, PUYALLUP

**APPENDIX – E**

**PIERCE COUNTY WIDE: EMS TASK FORCE**

**EMS TASK FORCE (3 ALS, 2 BLS TRANSPORTS, MSO & TM LDR)**

PRIMARY	SECOND	THIRD
M91	M95	M96
M61	M68	M63
TM99		
M20	M22	M21
M59	M58	M51
M11	M13	M16
M31	M24	
M68	M63	M60
M44	M47	
TM98		

PRIMARY	SECOND	THIRD
A114		
A76		
A51		
A84		
A15	A19	A169
A34		

MSO
C506
C330
C331
C905
C104

TM LDR	SECOND
B20	
B61	B66
B51	
C605	

**ALS STRIKE TEAM**

PRIMARY	SECOND	THIRD
M91	M95	M96
M61	M68	M63
TM99		
M20	M22	M21
M59	M58	M51
M11	M13	M16
M31	M24	
M40	M402	M43
M68	M63	M60
M44	M47	
TM98		

MSO
C506
C330
C331
C905
C104

TM LDR	SECOND
B20	
B61	B66
B51	C506
C605	

**ASSEMBLY POINTS:**

STN 51 \*\* 6711 KIMBALL DR, GIG HARBOR  
 STN 66 \*\* 9813 128 ST E, PUYALLUP

**APPENDIX – E**

**PIERCE COUNTY WIDE:**

**LADDER STRIKE TEAM**

PRIMARY	SECOND	THIRD
L68		
TL99		
L21		
L13		
L101		
L91		

TM LDR	SECOND
TFD BC	
B20	
B61	B66

**WILDLAND TASK FORCE (4 BRUSH, 1 TENDER & 2TM LDR)**

PRIMARY	SECOND	THIRD
BR11	BR16	
BR60	BR69	
BR51	B55	
BR44	BR46	
BR76		
BE176	BR171	BR173
BR94		

PRIMARY	SECOND	THIRD
T40	T42	
T55	T57	T53
T170	T171	T173
T92		
T67		
T19		
T44	T45	
T101		

TM LDR	SECOND
B61	B66
B51	C503
B94	C903
C103	C102

**ASSEMBLY POINTS:**

STN 51 \*\* 6711 KIMBALL DR, GIG HARBOR

STN 66 \*\* 9813 128 ST E, PUYALLUP

**APPENDIX – F**

**Hand Crew Callouts:**

**Bates Tech College**

Monday-Friday 0800-1700 hrs

253-680-7460

After hrs:

Pat Piper

253-680-7463 Office

253-380-2440 Cell

253-851-1608 Home

Available Equipment:

- Brush Engine and crew seasonally available for “in county” response.

**DNR Hand Crew**

1-360-802-7080

Dispatch

1-360-902-1300

Resource Protection

Dispatched thru DNR

**Mt View Fire & Rescue**

King Co FD #44

1-253-852-2121

Dispatched thru Valley Comm

Mutual aid within Pierce County – outside the County \*\*Cost based on State Chiefs Rate\*\*

APPENDIX -G

**Pierce County Fire Resource Plan  
FireComm Checklist**

- \_\_\_ 1. Nature: \_\_\_\_\_ Address: \_\_\_\_\_  
Working Freq: \_\_\_\_\_ Staging Loc: \_\_\_\_\_
  
- \_\_\_ 2. Type of Response Requested:
 

___ Engine Strike Team ___ BLS Strike Team ___ Tender Strike Team ___ Urban Task Force ___ Wildland Task Force ___ Rural Task Force ___ Interface Task Force	___ ALS Strike Team ___ Ladder Strike Team ___ Wildland Engine Strike Team ___ EMS Task Force ___ Wildland Hand Crew ___ Overhead Team
--	---
  
- \_\_\_ 3. Host Zone # \_\_\_\_\_ Response Zone # \_\_\_\_\_ or PCW
  
- \_\_\_ 4. Create CAD Incident (using address of incident and appropriate type i.e. ET for Engine Team, etc)
  
- \_\_\_ 5. CAD Page Fire Resource Coordinators with info (!FRC), Page AND tone first up PC Fire Coordinator Chief (if no response in 5 mins, go to next chief).
  
- \_\_\_ 6. Tone units **(USING ZETRON! and "ALL STN" tones)** in the following format: (Units) + (Type of Request) + (Assembly Point\*) + (Team Leader to Contact FireComm by Phone) + Respond on F1 \*Overhead team goes direct to scene
  
- \_\_\_ 7. Units have 4 minutes to respond via radio. Replace unavailable units, based on runcards. If unable to fill a COMPLETE response from first zone, cancel ALL units and start over at step 4 with next up zone. \*\*Overhead team can respond without a complete response with IC permission. If a unit is not RESPONDING in 4 mins - replace them.
  
- \_\_\_ 8. Team Leader Contacts FireComm by Phone, provide: Nature, Location, Fire Dept Handling, Base Location, Ops Frequency, Composition of Teams/Units Responding, Response Mode, Special Information and any other Info Available.
  
- \_\_\_ 9. Contact DEM for Mission Number and any special requests needed.
  
- \_\_\_ 10. Track Times and Assign Case Numbers
  
- \_\_\_ 11. Fax copies of all paperwork to County Coordinator (page 34)

## APPENDIX – H

### RESOURCES AND CONTACTS

#### Command/Management:

**County Overhead Team** Five Command Officers and One MSO Request from through Fire Comm

**MOCC and Tac 1 DEM Mobile Command posts** with mapping, computer equipment, Radio communications. Fire Comm will provide a dispatcher upon request to do radio communications for Command. Request through FireComm to DEM on Duty Officer.

#### Support Services:

**Angel 1 van** available from the Tacoma Pierce County Chaplaincy for support of emergency workers at the incident scene including coffee and light snacks. Counseling and defusing services also available. Contact DEM Duty officer 253-798-7470 24/7.

#### Emergency Medical:

**MMRS (Metro Medical Response System)** Pharmaceutical supplies are available for use by first responders in the event of a terrorist incident involving a weapon of mass destruction.

**In the event of a chemical exposure**, Mark I kits and Valium Auto injectors are available. They are stored at three sites; Tacoma Fire Department, Central Pierce Fire & Rescue, and Gig Harbor Fire Department. **To obtain these supplies contact your dispatch agency.** They will contact Tacoma Fire Dispatch. Provide the following information:

- ✓ **Number of victims**
- ✓ **Location of victims**
- ✓ **On-scene point of contact for medications**
- ✓ **Call back number**

TFD will initiate their internal notification process. Each storage site is responsible for ensuring the requested pharmaceuticals be delivered within 30 minutes. In the event multiple sites are affected in the county, TFD will contact the Disaster Medical Control Center (Good Samaritan ED) to coordinate distribution.



**In the event of an attack with a biological agent**, contact Tacoma Pierce County Health Department at 253-798-6410 or 1-800-726-6404. They will confirm the exposure and follow their protocols for distribution and administration.

Level B Biohazards suits are also available. Please notify your dispatch agency while making your initial request if you need these. They are stored at the same sites as the pharmaceuticals.

**Equipment:**

**Buses** for transporting people or for sheltering in place. Pierce County Transit contact DEM Duty officer 253-798-7470

**Aviation** - Air resources can be requested via Washington State Emergency Management Division (EMD) duty officer 24/7 1-800-258-5990. Air resource are equipped with FLIR (thermal Imager), Night Sun (light), video down link, digital video recording, night vision, hoist, and water bucket. (I would strike this sentence. Who accepts the liability for a civilian helicopter, not under contract?)

**Construction Equipment** available from Pierce County public works on request through DEM, Those listed in the DNR Resource Book are available by contacting DNR

**Joint Base Lewis-McChord  
Forestry Branch**

Dan Leeper  
Wildland Fire Program Manager  
[daniel.leeper@us.army.mil](mailto:daniel.leeper@us.army.mil)  
office 253-966-6438  
cell 253-377-8974

## APPENDIX – I

### DNR Inmate Crew Hiring/Standard Lunch

**Dispatch Procedures:** Jurisdictional agency requests a 10-person crew through their dispatch center (FireComm). FireComm calls DNR dispatch to request the crew, and gives direction to the fire. DNR will dispatch a crew and notify FireComm of an ETA.

**Logistic Policy:** Crews that are dispatched from camp prior to 0530 are entitled to a breakfast. Crews that return from a fire to camp after 1730 are required to be provided a dinner. Lunches are usually made the night before so they usually come with lunches. Since the lunches are made the night before, they can eat their lunches for breakfast depending on the situation and then lunches would need to be ordered. This needs to be worked out with the supervisor. Attached is a meal agenda. Also, special dietary needs must be met, for example: vegetarian or no pork. Usually the foreman will notify you of that.

These are women crews typically, there is usually dense enough vegetation they can get privacy to relieve themselves. However in open area a port-a-potty would need to be furnished.

**Billing Procedures:** DNR will bill the jurisdictional agency for the cost of the crew. Typically the cost of a crew and foreman for a normal 10-hour workday is around \$600. Meal cost is NOT included in that price. The crews normal work schedule is Monday thru Thursday. Days off would result in a higher cost to hire the crews.

- You may hire a DNR liaison to work between the jurisdictional agency and the crew, until you become familiar with the inmate crews.
- The DNR liaison may respond under mutual aid for a short duration to assist.

DNR dispatch will also order the lunches for you, however you may have to send someone to pick them up. If you take the attached ‘Standard Fire Lunch’ requirements to your local Safeway or QFC, they can usually put these together for a reasonable price and in a reasonable time. Tell them this is an emergency lunch order.

## **STANDARD FIRE LUNCH**

- 2 Meat sandwiches (meat w/butter only) 3-4 ounces of meat per sandwich. Turkey, Ham, Beef or Pastrami. Mustard, Mayo and Ketchup in small packets.

### **OR**

- 2 Vegetarian sandwiches – Bread or bagel, cheese, vegetables, cream cheese in packets.
- 2 Slices of cheese individually wrapped
- 2 Small cans/boxes of juice or 1 container of Gatorade type drink (NO POP)
- 2 Candy bars or a desert (individually wrapped cookies, etc) No cream type
- 1 Package of gum
- 1 Apple or Orange (NO Banana)
- 1 Small package of potato chips or pretzels.

**No peanut butter and jelly unless specified and ABSOLUTELY no egg products on or in sandwiches**

**No substitutions for the remainder of the above items.**

Maximum price per lunch, \$14.00 including tax

**APPENDIX – J**

**FIRE RESOURCE ACTIVITY TYPES**

ALSST .....	ALS Strike Team
BLST.....	BLS Strike Team
EMSTF.....	EMS Task Force
ET.....	Structural Engine Strike Team
ITF.....	Interface Task Force
LST .....	Ladder Strike Team
OHT .....	Overhead Team
RTF .....	Rural Task Force
TT.....	Tender Strike Team
UTF.....	Urban Task Force
WEST.....	Wildland Engine Strike Team
WHCT.....	Wildland Hand Crew Team
WTF .....	Wildland Task Force

APPENDIX - K

AVIATION RESOURCES





Pierce County does not have any full time aviation resources. There are no rescue helicopters or EMS helicopters that are based within Pierce County. The Sheriff’s Department has two fixed wing aircraft and one light turbine helicopter on a part-time basis. Pierce County DEM, the Sheriff’s Department, and Central Pierce are partnered with the Seattle (UASI) Regional Aviation Program to provide aviation resources. These resources are on a space available basis to Pierce County by King, Snohomish County, and WSP Aviation .







Aircraft can provide overhead reconnaissance, communications, Forward Looking Infrared (FLIR), and video down-linking to incident command via hand-held receivers or the internet from State or County EOC.

Snohomish Snowhawk 10 can provide water bucket drops. If this aircraft is not available then contact DNR Aviation at 360-902-1300, or a commercial vendor. Central Pierce has a Call When Needed (CWN) contract with Northwest Helicopters in Olympia for helicopter support.

All requests for Aircraft should go through State DEM at 1-800-258-5990.

Aircraft Resource List:	AIR OPERATIONS B/C GARDEN PILOT ED HRIVNAK PILOT JEFF SHARP JOHN LESTER	CENTRAL PIERCE CENTRAL PIERCE PC DEM PCSD, AIR SUPERVISOR
-------------------------	---	--

King County Sheriff's Office (KCSO)	
	<b>Guardian 2 (Operational)</b> UH-1H (Helicopter) Medium lift helicopter for Law Enforcement, Search and Rescue Missions, Transportation and insertion of Special Teams and Cargo Transport. Night Vision Goggle Equipped. Hoist Equipped.
	<b>Guardian One (Operational)</b> B-407 (Helicopter) Patrol Helicopter equipped with: FLIR (thermal imager), Night Sun, Pronet, LoJack, Video Downlink, Digital Video Recording, Project Lifesaver Receiver, Moving Map and GPS. Night Vision Goggle Equipped. Three OH-58's available as back-up.
Pierce County Sheriff's Department (PCSD)	
	<b>PIERCE 1 (Operational)</b> Cessna Turbo 206 (Fixed Wing) Patrol aircraft - Communications: VHF/UHF/700/800 law enf. radios. Lojack, FLIR, Microwave data-link, video camera. Aircraft operational.
	<b>PIERCE 2 (Operational)</b> Cessna 182 (Fixed Wing) Patrol Aircraft - Communications: VHF/UHF/700/800 law enf. radios.

	<p><b>PIERCE 6 (Operational)</b>                  MD-500E (Helicopter)                  Aerial Search platform. 2 Garmin 530 GPS, C-20B Engine, aux fuel tank, high skids.                  Delayed response time. Primary comm. is on 123.1 VHF air/ground. VHF Police / Fire radio.</p>
<b>Snohomish County Sheriff's Department (SCSO)</b>	
	<p><b>SnoHawk1 (Operational)</b>                  OH-6 (Hughes 500) (Helicopter)                  Patrol, Search, Night Vision Goggle crew, FLIR, NightSun, LoJack, Video Downlink, Moving Map, Shorthaul ops. Crew: 1 Pilot, 1 Tactical Flight Officer</p>
	<p><b>SnoHawk10 (Operational)</b>                  UH-1H (Helicopter)                  Huey medium lift aircraft, Max elevation 10,000 ft, SAR, Advanced Life Support, Rescue Hoist, Short Haul, Special Operations transport, Water Bucket, Mass Casualty Kit, Cargo Lower, Long Line ops. Crew: 2 Pilots, 1 Crewchief, 1-2 Rescue Technicians, 1 Flight Medic (Fire Paramedic)</p>
<b>Washington State Patrol (WSP)</b>	
	<p><b>WSP C-182 (Operational)</b>                  Cessna 182 (Fixed Wing)                  Patrol M-F, in AM. Traffic Enforcement, Traffic Congestion Management, and Transportation</p>
	<p><b>WSP Smokey 3 (Operational)</b>                  Cessna 206 (Fixed Wing)                  FLIR with video downlink, Traffic Enforcement and Congestion Management, Aerial Security &amp; Surveillance, Counter-Drug Support, DART/DUI Patrol, Search and Rescue, HLS Missions, Fire Management, and Natural Disaster Support. Direct dial SAT phone 480-263-5954</p>
	<p><b>WSP Smokey 4 (Operational)</b>                  Cessna 206 (Fixed Wing)                  FLIR with video downlink, Traffic Enforcement and Congestion Management, Aerial Security &amp; Surveillance, Counter-Drug Support, DART/DUI, Search and Rescue, HLS Missions, Fire Management, and Natural Disaster Support. Direct dial SAT phone 480-458-9215</p>

<p><b>UASI REGIONAL AVIATION ASSETS QUICK REFERENCE LIST</b>  <b>Washington State EMD Duty Officer 1-800-258-5990</b>  <b>Pierce County DEM 253-798-7470</b>                  Common Operating Frequencies: 123.1 VHF, LERN, OSCAR                  800 MHz MARS or LERN. State Ops 1 for short range tactical</p>	
<b>King County Sheriff's Office (KCSO)</b> Bell 407 with FLIR and down-link. Rescue helicopter with hoist.	
Supervisory Contact: Sgt. Jon Loye O-206-255-2984, C-206-255-2984	
24x7 Dispatch Center: 206 296-3311- Radio Supervisor Air Support Unit Hanger 206-296-2740	
Common Operating Frequencies:	<ol style="list-style-type: none"> <li>1. 800mhz MARS-</li> <li>2. 800 mhz-KCSO</li> <li>3. UHF/VHF radios-MARS</li> <li>4. 123.1</li> </ol>

<b>Pierce County Sheriff's Department (PCSD)</b> Fixed wing with FLIR and down-link. MD-500E helicopter	
Supervisory Contact: Sgt. John Lester C-253-377-8641, O-253-798-7585 Central Pierce Fire and Rescue Liaison: Ed Hrivnak cell-253-691-4422 CPFR Air Ops Nextell – 253-377-8567	
24x7 Dispatch Center: 253-471-4990	
Common Operating Frequencies:	<ol style="list-style-type: none"> <li>1. VHF PC East 154.95</li> <li>2. VHF LERN 155.37</li> <li>3. 123.1 VHF or OSCAR</li> </ol>
<b>Snohomish County Sheriff's Department (SCSO)</b> Rescue Helicopter with hoist/ ALS. H-500P with FLIR and down-link.	
Supervisory Contact: Sgt Danny Wikstrom 425-754-6780 SAR Office 425-388-3328	
24x7 Dispatch Center: 425-407-3900	
Common Operating Frequencies:	<ol style="list-style-type: none"> <li>1. 155.415</li> <li>2. LERN</li> <li>3. 123.1 VHF air/ground</li> </ol>
<b>Washington State Patrol (WSP)</b> Fixed wing with FLIR and data-link.	
Supervisory Contact: Lieutenant Tristan Atkins or Sergeant Jim Nobach	
24x7 Dispatch Center: (360) 753-6173 business hrs OR (360) 239-2509	
Common Operating Frequencies:	<ol style="list-style-type: none"> <li>1. 123.1 VHF air/ground</li> <li>2. 122.775</li> <li>3. LERN</li> </ol>